



## PURPOSE

The K0413-02 model battery is an adequate substitute of the original Siemens batteries used in the EPD1 and EPD2 dosimeters.

## MAIN ADVANTAGES

- Possibility of recharging
- High reliability proved by long term operation at the NPPs
- Protection against complete discharge and damage

## DESCRIPTION

The EPD battery uses the LI-ION technology; the battery is built in a special case with the EPD contacts.

The battery can be recharged by a special charger which is supplied by the producer of the batteries. The charger can simultaneously charge more batteries.

In case that the operational cycle of the battery has remarkably reduced, replace the battery.

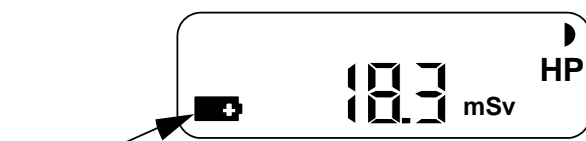
The battery should not be short-circuited.

## BATTERY REPLACEMENT

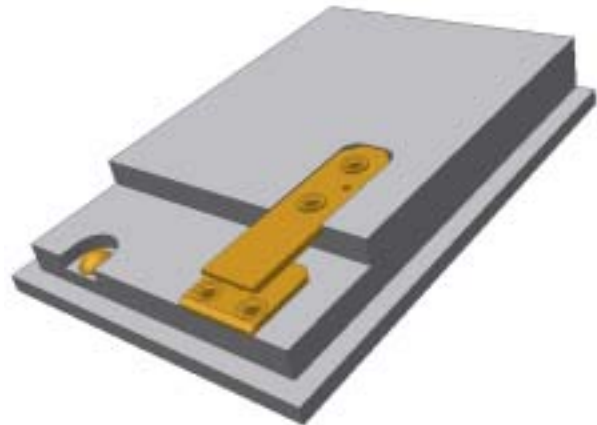
The battery should be recharged or replaced if the low battery symbol appears on the dosimeter display. This indicates that voltage has reduced below an acceptable value.

If the low battery symbol appears on the LCD display, the battery should be replaced as soon as possible. This will prevent switching off the dosimeter.

Only qualified engineer can replace the battery.



Low battery symbol



## SPECIFICATIONS

|   |                    |
|---|--------------------|
| Voltage   | 3.7 V              |
| Capacity  | 900 mAh            |
| Operational time                                | 6 weeks            |
| Operational conditions:                         |                    |
| • temperature                                   | up to +50°C        |
| • protection against rain and humid environment |                    |
| Storage conditions:                             |                    |
| • temperature                                   | from +5°C to +50°C |

## ORDERING DATA

When ordering, please, specify the name, type and the model.

| Model    | Description  |
|----------|--|
| K0413-02 | Variant with rechargeable battery  |
| K0413-xx | Battery parameters and the supply scope modified according to the customer's requirement |
| K0415-01 | K0413-02 battery charger for 1 battery   |
| K0415-03 | K0413-02 battery charger for 3 batteries   |
| K0415-05 | Dosimeter battery charger for 5 batteries.   |

## CONTACT ADDRESSES OF PRODUCERS

**Czech Republic:** VF, a.s., nám. Míru 50, 679 21 Černá Hora  
Tel.: +420-516 428 611, Fax: +420-516 428 610  
e-mail: office@vf.cz, http: // www.vf.cz

**Slovak Republic:** VF, s.r.o., M.R. Štefánika 9, 010 02 Žilina  
Tel.: +421-41-507 2411, Fax: +421-41-507 2410  
e-mail: office@vf.sk, http: // www.vf.sk

## YOUR SUPPLIER